

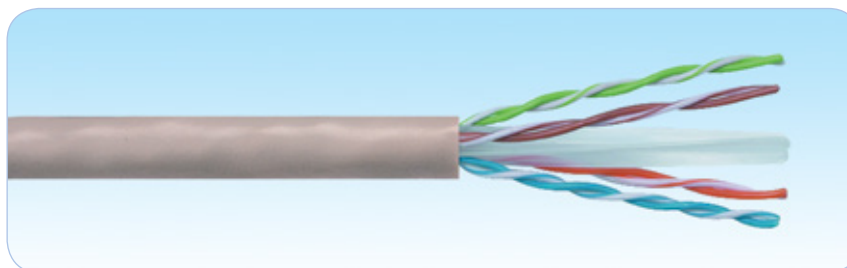
Description

HCS DataLink 250 cable series consists of 100 Ohm impedance, 4-pair and 8-pair U/UTP cables for horizontal installations in local area networks (LANs). All cables fully conform to and provide a substantial margin above all Category 6 requirements of ANSI/TIA-568.2-E and IEC 61156-5.

Applications

HCS DataLink 250 Horizontal cables support all relevant LAN applications, including the following protocols:

- ☑ 1000BASE-T Gigabit Ethernet
- ☑ ATM 155
- ☑ TP-PMD
- ☑ 100BASE-T Fast Ethernet
- ☑ 100BASE-T2
- ☑ 100BASE-T4
- ☑ 100BASE-TX
- ☑ Token Ring 100 Mbps
- ☑ ATM 52
- ☑ ATM 25
- ☑ 10BASE-T Ethernet
- ☑ Token Ring 4 Mbps and 16 Mbps
- ☑ Broadband and Baseband Video
- ☑ ISDN Basic and Primary Access
- ☑ 1BASE-5 Starlan
- ☑ ISALAN
- ☑ ITU V.21 and X.11



Qualifications and Approvals

HCS DataLink 250 Cables are tested and verified for full compliance with the following standards:

- ➔ Category 6 according to ANSI/TIA-568.2-E
- ➔ Category 6 according to IEC 61156-5 (for ISO/IEC-11801 2nd Edition).
- ➔ 250 MHz according to CENELEC EN 50288-6

Benefits & Features

- ➔ Testing every box or reel of cable prior to shipment - Providing the highest degree of quality assurance.
- ➔ Exceptional material properties and cable design - Providing a unique Century™ Lifetime Warranty.
- ➔ High ACR values - Providing low BER (Bit-Error-Rate) in all applications.
- ➔ Extremely high pair-balance - Providing excellent EMC (Electro Magnetic Compatibility), minimizing radiation and maximizing noise immunity.
- ➔ Revolutionary pair lay scheme - Providing an extremely low delay skew.
- ➔ Co-extruded crisp and clear spiral color coding of wires - Providing positive wire identification and ease of installation.
- ➔ Descending sequential meter mark - Providing easy stock and left-over handling.
- ➔ Smooth and rigid jacket - Providing fast and easy cable pulling and installation.
- ➔ Batch number printed every meter - Providing fast retrieval of test results from data-base.
- ➔ A comprehensive product range - Providing all state-of-the-art cable constructions.
- ➔ Large variety of packaging options - Providing minimum scrap and left-over cable sections.
- ➔ Unique DoubleSafe™ Quality Assurance Program - Providing lowest rejection rate available.

PHYSICAL AND MECHANICAL PROPERTIES

4 color-coded, unshielded twisted pairs cabled together around a star-shaped filler and overall jacketed.

Siamese (Figure-8) cables are made of two identical 4-pair cables connected in a zip-cord formation, one cable identified with two raised ribs on the jacket surface.

Basic Conductor	Solid, 23AWG, bare annealed copper
Insulation	Polyolefin
Number of Insulated Conductors	8, twisted in 4 pairs. (8 pairs in FIG-8 cables)
Color Code of Pairs	Blue x White/Blue, Orange x White/Orange, Green x White/Green, Brown x White/Brown.
Overall Tape Wrap	None.
Overall Shield	None.
Drain Wire	None.
Outer Jacket	LSOH Halogen free flame retardant or PVC compound.
Standard Jacket Color	Light Gray RAL 7035. Other colors available upon request.
Standard Surface Marking	Includes HCS P/N, Cable Description, Meter Mark and Batch Number.
Pulling Force	50 N/mm ² max.
Short Term Bend Radius	8xOD mm
Long Term Bend Radius	4xOD mm
Storage Temperature	-20 to +80C
Temperature Operating Range	-20 to +60C
Installation Temperature Range	0 to +50C
Flame Test	IEC 60332-1, IEC 60332-3-24 or IEC 60332-3-25.
Conductor Size Test	UL 444.
Halogen Content in LSOH Cables	Null.